



**COSMO CONSULT**  
Business-Software for People



**Business  
Software  
for People**

## cc | text module

INTEGRATED IN THE "DOCUMENT MANAGEMENT PACK"

CREATION OF DATE VALIDITY CONTENT

INSERT HEADERS, FOOTERS AND LINE TEXTS

TEXT MODULES FOR MASTER DATA ALWAYS EDITABLE

INSERT SPECIFIC BOILERPLATES IN THE PURCHASE, SALES, PRODUCTION AND SERVICE REPORTS

CONSISTENT SYSTEM FOR DOCUMENT FILING

# EASY ADMINISTRATION

"COPY & PASTE" FORMATTED BOILERPLATES FROM WORD WITH FORMATTED DOCUMENTS

NEW TECHNOLOGY OF UNIQUE TEXT SET IDS

**Microsoft Partner**  
Gold Enterprise Resource Planning

# cc|text module

Text Management Integration for Microsoft Dynamics NAV

## CC|TEXT MODULE FOR MICROSOFT DYNAMICS NAV

The cc|text module from COSMO CONSULT contains the functionality to link extended text to most areas of Microsoft Dynamics NAV. Users are able to set up text as master data linked to Customers, Vendors, Items, etc. which can be copied to different documents like Sales Orders, etc. These texts can be changed and printed. Users can define which text should be copied to which document. There are different types of text: Header and Footer Text and Line Text.

cc|text module provides users the ability to add extra textual information to records such as items, vendors, customers, resources, and G/L accounts, as well as to the master data of the manufacturing module and to the Dynamics NAV standard texts. These texts can be:

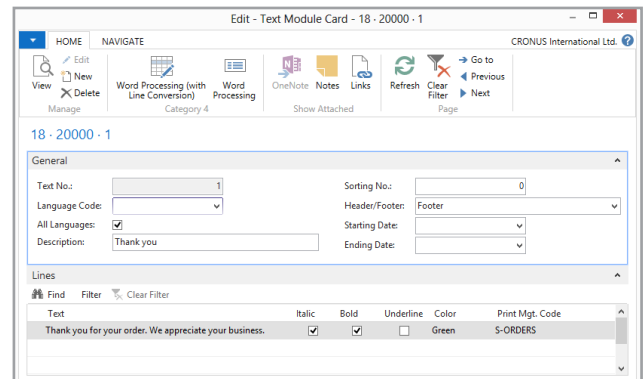
- ▶ Inserted as headers, footers and line texts in the purchase, sales, production and service pages and printed in predefined and customized reports.
- ▶ Displayed in predefined pages (system message) without being printed. They can be inserted manually or automatically.

It is also possible to define language-specific and date restricted text modules.

The cc|text module set up for master data is always editable, whereas in documents, like sales and purchase orders the status determines if the text is editable or not. In all posted and archived documents, the text is not editable to maintain integrity of printed and displayed texts.

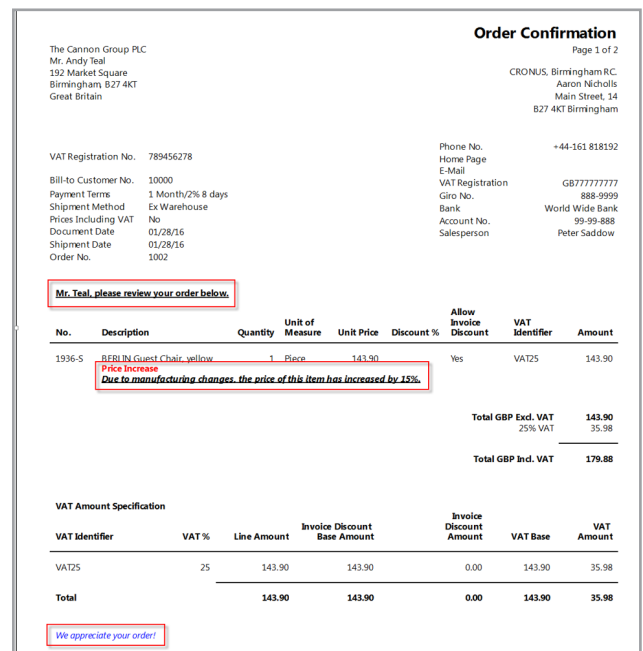
A new technology of unique text set IDs is used to save the same textual content only once in the database. With this technique, the content is in the system once, so there is no redundant data in multiple documents.

The cc|text module includes blocks of text lines for a specific language, date validity and position (header/footer). Each line can have its own mark-up (italic, bold, underline) and foreground colour. The print management defines whether the text line will be printed on predefined reports or only pop-up on specific tables (like sales or purchase documents) in a notification page.



TEXT MODULE EDITING CARD

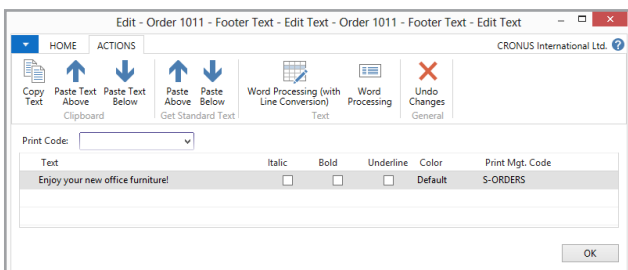
Text can be configured for master data, such as items, customers and vendors. Texts for customers and vendors are copied according to the configuration into the header or footer of the document. Furthermore, depending on the printer management, they are



REPORT WITH PRINTED HEADER, LINE AND FOOTER TEXT

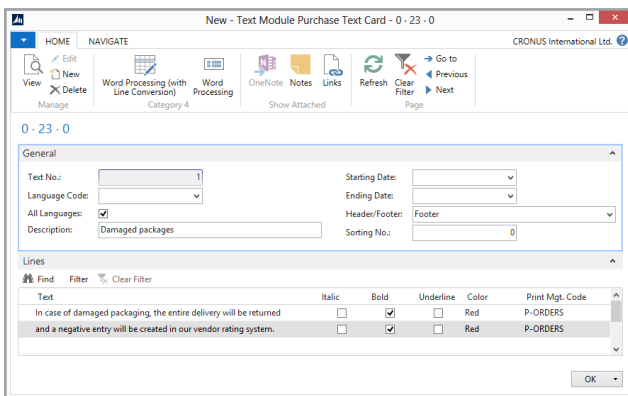
printed in the header or footer section of the document's report. Boilerplates assigned to master data like items are printed below the description for each sales or purchase line.

A simple line-based text editor is used to view or modify existing text or to add new text. Standard text or text from the clipboard can be copied above or below existing text lines. The action "Undo Changes" allows the restore of text to the original value.



PASTE TEXT ABOVE/BELOW

With the Sales Text functionality, users can enter standard texts to be printed and displayed respectively in sales documents. The Purchase Texts functionality offers the ability to predefine standard texts to be printed and displayed in purchase documents. Sales and purchase texts can be filtered to specific customers and vendors. The "Use for" allows the copy of texts to fixed customers, those with a specific country code or a customizable field value (filter). Thus it is possible to manage texts across multiple customers or vendors in one place.

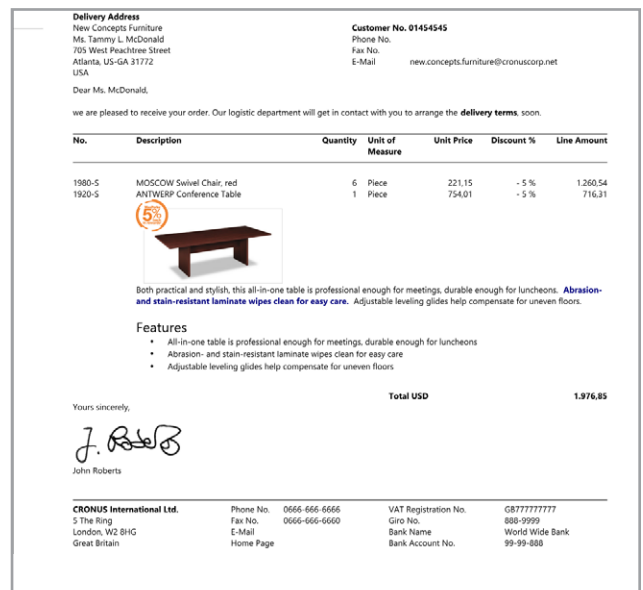


TEXT CARD ADDITIONAL INFORMATION

## FORMATTED DOCUMENTS

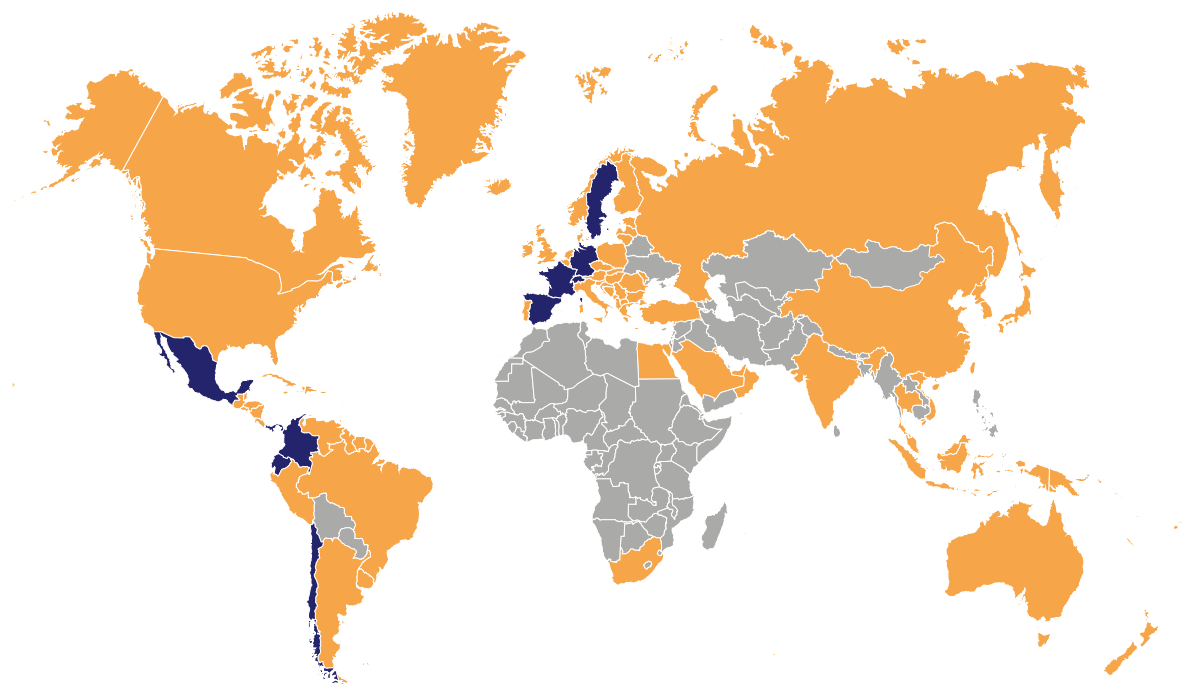
Together with cc|formatted documents, the cc|text module is able to save and print more complex formatted text. A word processing editor (WYSIWYG) is used to enter text with more mark-ups and even pictures. Through "copy & paste" from Microsoft Word or websites, the formatting is conveyed to the editor. Pictures are embedded into the text and stored without the need of an extra repository.

The "Word Processing (with Line Conversion)" action translates the fully formatted text into text lines, to remove the mark-ups automatically and work with standard Dynamics NAV text handling.



INTEGRATION OF CC|FORMATTED DOCUMENTS





GERMANY | FRANCE | SPAIN | SWEDEN | SWITZERLAND  
CHILE | COLOMBIA | ECUADOR | MEXICO | PANAMA

[www.cosmoconsult.com](http://www.cosmoconsult.com)